

Bristol Photo Festival

Visit 23rd and 24th Sept '21

Bristol Photo Festival is a new and innovative festival, commissioning and producing exhibitions biannually across the city, alongside an ongoing programme of talks, events, workshops and training through a partnership model of collaboration. The festival provides platforms for national, international, student and emerging photographers, and an extensive outreach and engagement programme with schools, community groups, third level educational institutions, charities and libraries.

There is a programme, which you can look at to see what you'd like to visit join in with in your own time, but we have selected a couple of venues to get you going as they include 5 great exhibitions between them. If you go individually at other times, it's worth checking the venue websites/calling in advance to check nothing has changed or been cancelled.

You will need to plan your visit on Thu and Fri 23rd /24th Sept by booking individually for each of the 2 venues (there are no adult group bookings). You may wish to agree with others in your group to try and book the same or similar time slots. One in the venue you can stay as long as you like. As a guide you should spend about 2 hours at the museum and 1 hour at the RPS. You can go both days and divide up the exhibitions or just one busy day. You can fill in any time with photographing in and around the city and you may wish to think in advance what you'd like to photograph/film.

You will make your own way to Bristol and to the galleries. There will be members of staff on hand, should you need us and we have made arrangements to meet you at the end of the day to discuss what you have seen. We will be in the different venues, but due to having to book time slots ourselves cannot guarantee we will see you in each place.



You can walk from the bus station to Bristol City Museum (or take another bus), and you will need to take a bus or other transport from the centre to 'Paintworks' where the RPS is based. (See end of this sheet for travel details).

You should take a notebook and pen (photos may not be allowed in some spaces) and record things that interest you. It might be the names of photographers, dates and perhaps even some sketches to remind you of compositions. All this experience will feed into your knowledge and the references will help with modules. You may wish to take some images when out and about too.

At the end of this sheet we have included some extras you may be interested in.

There is so much to do and see – have a great time and try and stick with another person/group when travelling. If you are unsure of anything please call Sam Brooks, Rich Edkins or Jamie Dormer-Durling (Jamie is there Friday only) on Teams.

Follow local gallery/café guidance on Covid Safety and maintain a safe distance with people outside of your bubble.

Please look out for each other and include people you don't yet know in your plans.

On Thu 23rd September, we will be at all the exhibitions starting at 10.30am. We would like you to contact us on your Teams year group chat to confirm your attendance on the day. We will finish with a coffee/drink at **BocaBar café near the RPS at 3.00pm-4.00pm** - please join us then for a catch up and to discuss the work seen. Please inform us via Teams if you will be going straight home without meeting.

Unit 3.1, Paintworks, Bath Road,

Arnos Vale, Bristol

BS4 3EH

On Fri 24th September, we will be at all the exhibitions starting at 10.30. We would like you to contact us on Teams year group chat to confirm your attendance on the day. We will be at the **Weatherspoons V-Shed, at 3.00pm -4.00pm** to discuss what we have all seen. Please inform us via Teams if you will be going straight home without meeting.

The Waterfront

Canons Road, Bristol

BS1 5UH

Bristol city Museum:

Please book a slot at Bristol City Museum on 23rd or 24th September or both days (4 exhibitions here):



Island Life

18 May - 31 October 2021

Tue-Sun 10.00-17.00

VENUE: Bristol Museum and Art Gallery

Queens Road Bristol BS8 1RL



Island Life: photographs from the Martin Parr Foundation

Island Life draws upon photographs from the Martin Parr Foundation collection to show the changing fabric of our cities, society and collective identities. Focusing on post-war from the UK and Ireland, the exhibition will bring together images by over 60 photographers including Khali Ackford, Pogus Caesar, Elaine Constantine, Sian Davey, Chris Killip, David Hurn, Ken Grant, Markéta Luskačová, Graham Smith and Tom Wood. Collectively the images form a compelling study of national behaviour.

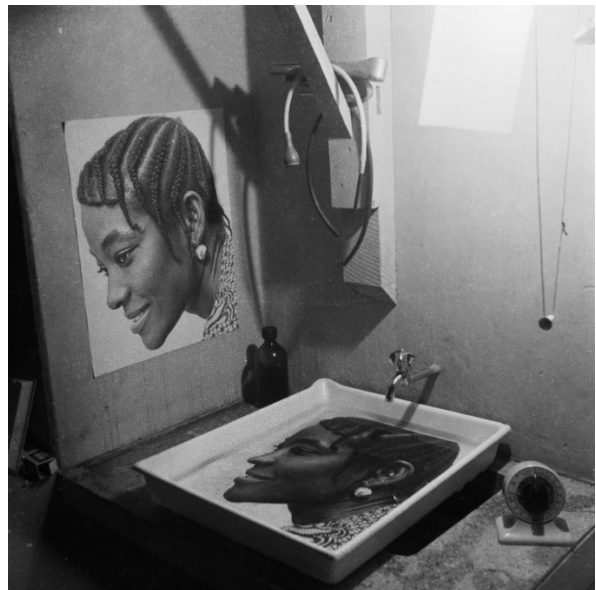
James Barnor: Ghanaian Modernist

18 May - 31 October 2021

Tue-Sun 10.00-17.00

VENUE: Bristol Museum and Art Gallery

Queens Road Bristol BS8 1RL



James Barnor was Ghana's first international press photographer working from his studio Ever Young at the time of independence (1957) and selling his pictures to the Daily Graphic and Drum magazines. He came to Britain in 1959, photographing London and returning to Accra where he established X23, the city's first colour photography studio. Ghanaian Photographer showcases Barnor's Black modernism, a fusion of pan- African futurism and 1970s style.

Beyond the Frame

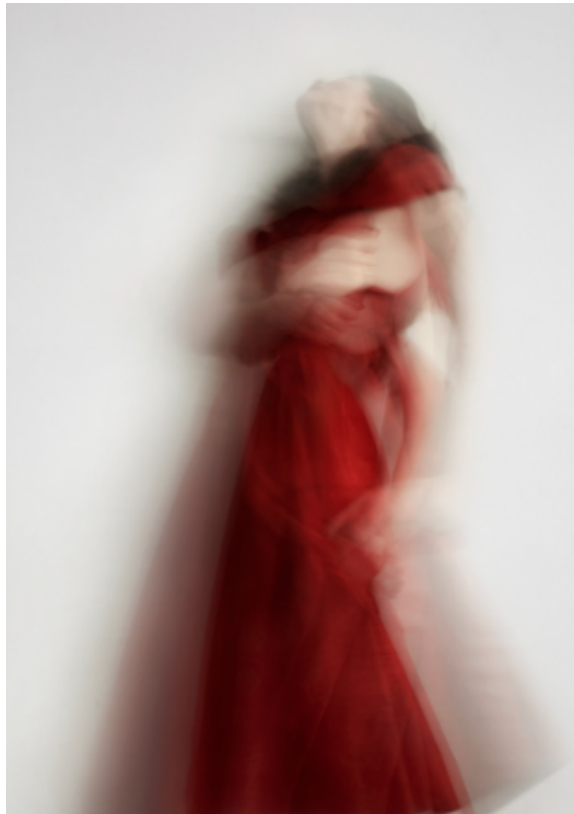
Heather Agyepong - Jessa Fairbrother - Lua Ribeira

18 May - 10 October 2021

Tue-Sun 10.00-17.00

VENUE: Bristol Museum and Art Gallery

Queens Road Bristol BS8 1RL



Artists Heather Agyepong, Jessa Fairbrother, and Lua Ribeira have been invited to take part in collaborate with Bristol Museum and Art Gallery. The artists' own work will be displayed alongside and juxtaposed with the Museum's collections and archives.

Heather Agyepong utilises her own image in her photography, performing a catalogue of identities that have paraded through colonial discourse on African peoples. Her work will be shown among the Grand Tour paintings from the 18th century offering a postcolonial perspective on the gallery. Jessa Fairbrother explores images of femininity through the lens of psychoanalysis and her work will be displayed among the museum's Pre-Raphaelite paintings and modern French art — presenting self-authored contemporary narratives alongside the historic images of women by men. Lua Ribeira's photographs will be presented amongst the angels and demons of Solario and Bellini and the abstract canvases of the galleries.

Lips Touched with Blood:

Sarah Waiswa

18 May - 31 October 2021

Tue-Sun 10.00-17.00

VENUE: Bristol Museum and Art Gallery

Queens Road Bristol BS8 1RL



Sarah Waiswa, a documentary and portrait photographer based in Kenya, will be collaborating with the British Empire and Commonwealth Collection at Bristol Archives. The exhibition *Lips Touched with Blood* will showcase a selection of her contemporary portraits of African people alongside portraits from the archives in a thought-provoking display, to reframe and challenge existing narratives around colonialism, power and identity. Sarah draws heavily on the captions of the archive images in her interpretation, and one of these has been used as the title of the exhibition.

Royal Photographic Society:

Please book a slot on 23rd or 24th September at the Royal Photographic Society (RPS) (1 exhibition here):



IN PROGRESS

Laia Abril - Hoda Afshar - Widline Cadet - Adama Jalloh - Alba Zari . Curated by Aaron Schuman

20 May - 24 October 2021

Thu-Sun 10.00-17.00

VENUE: The Royal Photographic Society



IN PROGRESS is a new show commissioned by the RPS consisting of five solo exhibitions of both new work and work-in-progress, by five of the most innovative photographers and photo-based artists working today. The exhibition explores a wide range of issues – including personal history, cultural identity, nationality, community, migration, displacement, memory, responsibility, morality, belief and the creative process – and highlights the diverse possibilities that photography offers in the pursuit of both artistic and social progress.

Travel

To Bristol:

X1 or 100 from Locking Road Car park to Bristol Bus Station, then walk to Bristol City Museum.

Buses 349, 178, 1 and X39 all go to Paintworks from the bus station.

Bristol City Museum: Getting here by bus

Bus numbers 1, 2, 4, 8, 9 and 72 all travel past the museum up Park Street and from the Clifton Triangle.

For more information and timetables please [visit the TravelWest website](#).

[View on Google Maps](#)

Getting here on foot

We're located on Queens Road just off Park Street, around a ten minute walk from the city centre.

Bicycle stands can be found next to the pedestrian crossing opposite Browns restaurant.

If you drive you will need to find a car park such as the Galleries car park or Trenchard Street car park (nearest).

RPS Gallery:

The Royal Photographic Society is located inside Paintworks creative quarter on the A4, Bath Road which is across from Arnos Vale Cemetery. Within the site our building is beside The Martin Parr Foundation and Crux Product Design.

Bike - We are located across the river Avon from the national cycle path West Country Way Route 3.

Bus - Buses run from the centre of Bristol, from Temple Meads and Bristol Coach Station and between Bristol and Bath. 1, 57, 349 and X39 stop at the Paintworks bus stop. For bus times please [visit the TravelWest website](#).

Train - Bristol Temple Meads is the nearest railway station. You can walk (approximately 20-25 minutes), cycle, take a bus or get a taxi to RPS House from Temple Meads. For tickets and live departure boards visit: www.nationalrail.co.uk.

Walking - from Bristol Temple Meads train station: when leaving the train station complex turn left, follow the road for a short way until you get to a large roundabout, continue straight ahead (over the bridge with metal arches) and follow the road (A4 towards Bath) until you get to a fork in the road with a post with three lamps on it, take the left fork and continue walking for about half a mile until you get to Paintworks on your left. It takes approximately 20-25 minutes to walk from Temple Meads.

Car - Sat nav: BS4 3AR or follow signs for Temple Meads Railway Station, then continue along the A4/Bath Road towards Bath bearing left at the Three Lamps junction. Continue for approximately one mile, Paintworks is on the left-hand side.

Parking - Paintworks has some visitor parking which is clearly signposted. This is a few hundred metres from RPS House and is limited to three hours.

Accessibility - If you have any accessibility requirements, please contact us on RPSHouse@rps.org in advance so we can assist you in your visit to RPS House.

Though there is some accessibility parking in Paintworks, we have some private parking spaces we can reserve for those with accessibility requirements. Please contact us in advance if you would like to reserve a space.

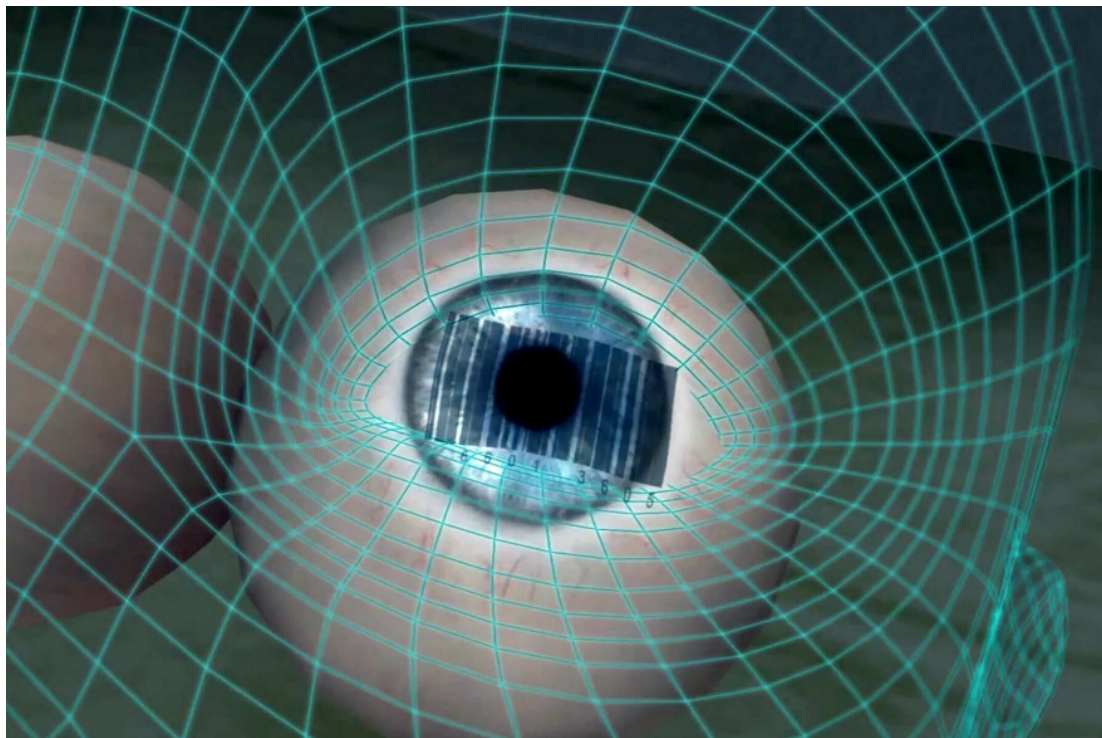
From street level car parking there are lifts available to reach RPS House on the raised ground floor. Within RPS House, all areas are fully accessible with a lift and ramps and restrooms on each floor.

See on google maps: [Paintworks on Google maps](#)

Extras if you like the sound of them:

Peggy Ahwesh: Vision Machines

The preview night for this Film / Video Installation exhibition is on the Friday evening



Exhibition preview: Friday 24 September, 6–8pm

<https://www.spikeisland.org.uk/programme/exhibitions/peggy-ahwesh/>

Vanguard | Bristol Street Art: The evolution of a global movement



<https://visitbristol.co.uk/whats-on/vanguard-bristol-street-art-the-evolution-of-a-global-movement-at-m-shed-p2857323>

Although is: £6 concession, £7 adult. Free for under 18s – ticket still required

Book a time slot: <https://pretix.eu/bristolmuseums/mshed/> or just turn up and hope to get in.

High Volume: Bristol Sounds



Photographs from Mark Simmons

23 September – 30 October 2021

Strange Brew, Bristol

10-12 Fairfax St, Bristol BS1 3DB, United Kingdom

Photographs chronicling Bristol's music scene since the 1980s by Mark Simmons.

I'd advise visiting on the Friday. Think you can get food/drink here during day too.